



Exit Out of the Ordinary

2020

AMP1053-1



Features

- Class AB linear LDMOS design
- Instantaneous HF frequency wide bandwidth
- Suitable for all single channel modulation standards
- Built-in monitoring and protection circuits
- High reliability and ruggedness

Operating Frequency Range

1MHz – 32MHz

Output Power

200W Min.

Gain/Description

53dB Min.

Best in Class HF Amplifier SSPA's



www.exoduscomm.com

1 2020
JANUARY

WE TH FR SA SU MO TU WE TH FR SA SU MO TU WE TH FR SA SU MO TU WE TH FR
1 2 3 4 5 6 7 8 9 10 11 12 13 14 15 16 17 18 19 20 21 22 23 24 25 26 27 28 29 30 31

12 2019
DECEMBER

S	M	T	W	T	F	S
1	2	3	4	5	6	7
8	9	10	11	12	13	14
15	16	17	18	19	20	21
22	23	24	25	26	27	28
29	30	31				

2 2020
FEBRUARY

S	M	T	W	T	F	S
						1
2	3	4	5	6	7	8
9	10	11	12	13	14	15
16	17	18	19	20	21	22
23	24	25	26	27	28	29

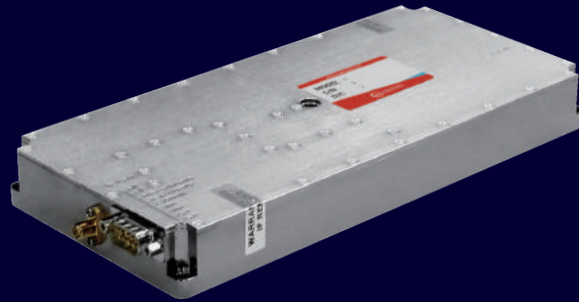
1

JANUARY

S	M	T	W	T	F	S
			New Year's Day 1	2	3	4
5	6	7	8	9	10	11
12	13	14	15	16	17	18
19	Martin Luther King Day 20	21	22	23	24	25
26	27	28	29	30	31	



AMP1099B



Features

- Class AB linear GaN design
- Instantaneous ultra-wide bandwidth
- Suitable for all single channel modulation standards
- Built-in protection circuits
- High reliability and ruggedness

Operating Frequency Range

0.7GHz – 6.0GHz

Output Power

50W Min.

Gain/Description

47dB Min.

Best in Class RF Amplifier SSPA's



www.exoduscomm.com

2 2020
FEBRUARY

SA SU MO TU WE TH FR SA SU MO TU WE TH FR SA SU MO TU WE TH FR SA
1 2 3 4 5 6 7 8 9 10 11 12 13 14 15 16 17 18 19 20 21 22 23 24 25 26 27 28 29

1 2020
JANUARY

S	M	T	W	T	F	S
			1	2	3	4
5	6	7	8	9	10	11
12	13	14	15	16	17	18
19	20	21	22	23	24	25
26	27	28	29	30	31	

3 2020
MARCH

S	M	T	W	T	F	S
1	2	3	4	5	6	7
8	9	10	11	12	13	14
15	16	17	18	19	20	21
22	23	24	25	26	27	28
29	30	31				

2

FEBRUARY

S	M	T	W	T	F	S
						1
2	3	4	5	6	7	8
9	10	11	12	13	14	15
16	Presidents' Day 17	18	19	20	21	22
23	24	25	26	27	28	29



AMP3132A



Features

- Class AB linear solid-state GaAsFET design
- Instantaneous wide bandwidth
- Small form factor and light weight
- Suitable for all single channel modulation standards
- Built-in protection circuits
- High reliability and ruggedness

Operating Frequency Range

26.5GHz – 40.0GHz

Output Power

13W Min. Psat

Gain/Description

52dB Min.



Best in Class RF Amplifier SSPA's

www.exoduscomm.com

3 2020
MARCH

SU MO TU WE TH FR SA SU MO TU WE TH FR SA SU MO TU WE TH FR SA SU MO TU WE TH FR SA SU MO TU
1 2 3 4 5 6 7 8 9 10 11 12 13 14 15 16 17 18 19 20 21 22 23 24 25 26 27 28 29 30 31

2 2020 FEBRUARY

S	M	T	W	T	F	S
						1
2	3	4	5	6	7	8
9	10	11	12	13	14	15
16	17	18	19	20	21	22
23	24	25	26	27	28	29

4 2020 APRIL

S	M	T	W	T	F	S
			1	2	3	4
5	6	7	8	9	10	11
12	13	14	15	16	17	18
19	20	21	22	23	24	25
26	27	28	29	30		

3

MARCH

S	M	T	W	T	F	S
1	2	3	4	5	6	7
8	9	10	11	12	13	14
15	16	17	18	19	20	21
22	23	24	25	26	27	28
29	30	31				



AMP2012CA-LC



Features

- Rack mounted system
- Class A/AB linear LDMOS design
- Instantaneous RF & VHF band wide bandwidth coverage **1300W Min.**
- Suitable for all single channel modulation standards
- Built-in protection circuits
- High reliability and ruggedness

Operating Frequency Range

2MHz – 250MHz

Output Power

1300W Min.

Gain/Description

60dB Min.



Best in Class RF Amplifier SSPA's

www.exoduscomm.com

4 2020
APRIL

WE TH FR SA SU MO TU WE TH FR SA SU MO TU WE TH FR SA SU MO TU WE TH FR SA SU MO TU WE TH
1 2 3 4 5 6 7 8 9 10 11 12 13 14 15 16 17 18 19 20 21 22 23 24 25 26 27 28 29 30

3 2020 MARCH

S	M	T	W	T	F	S
1	2	3	4	5	6	7
8	9	10	11	12	13	14
15	16	17	18	19	20	21
22	23	24	25	26	27	28
29	30	31				

5 2020 MAY

S	M	T	W	T	F	S
					1	2
3	4	5	6	7	8	9
10	11	12	13	14	15	16
17	18	19	20	21	22	23
24	31	25	26	27	28	29
						30

4

APRIL

S	M	T	W	T	F	S
			1	2	3	4
5	6	7	8	9	10	11
12	13	14	15	16	17	18
19	20	21	22	23	24	25
26	27	28	29	30		



AMP2041-1

Operating Frequency Range

1.0GHz – 2.5GHz

Output Power

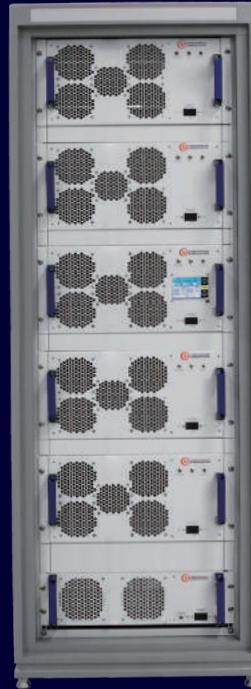
2200W Min.

Gain/Description

63dB Min.

Features

- Small form factor, rack mounted system
- Class A/AB linear design
- High power advanced GaN devices
- Instantaneous ultra-wide bandwidth
- Designed for EMI/RFI, lab, and general communication applications
- Suitable for linear CW and composite signal channel modulation standards & applications
- Built-in protection circuits, forward & reflected RF Sample ports
- High reliability and ruggedness with extensive monitoring & protection circuits
- All remote-control platforms included
- High efficiency, with unprecedented reliability and ruggedness



Best in Class RF Amplifier SSPA's

www.exoduscomm.com

5 2020
MAY

FR SA SU MO TU WE TH FR SA SU MO TU WE TH FR SA SU MO TU WE TH FR SA SU
1 2 3 4 5 6 7 8 9 10 11 12 13 14 15 16 17 18 19 20 21 22 23 24 25 26 27 28 29 30 31

4 2020 APRIL

S	M	T	W	T	F	S
			1	2	3	4
5	6	7	8	9	10	11
12	13	14	15	16	17	18
19	20	21	22	23	24	25
26	27	28	29	30		

6 2020 JUNE

S	M	T	W	T	F	S
	1	2	3	4	5	6
7	8	9	10	11	12	13
14	15	16	17	18	19	20
21	22	23	24	25	26	27
28	29	30				

5 MAY

S	M	T	W	T	F	S
					1	2
3	4	5	6	7	8	9
10	11	12	13	14	15	16
17	18	19	20	21	22	23
24 31	Memorial Day 25	26	27	28	29	30



AMP2070C



Features

- Rack mounted system
- Class A/AB linear GaN design
- Instantaneous ultra-wide bandwidth
- Designed for broadband EMI/RFI, Lab, Comm. and EW applications
- Suitable for CW, pulse and all single channel modulation standards
- Suitable for linear CW and composite signal channel modulation standards
- Built-in protection circuits
- High reliability and ruggedness

Operating Frequency Range
0.7GHz – 6.0GHz

Output Power
100W Min.

Gain/Description
50dB Min.



Best in Class RF Amplifier SSPA's

www.exoduscomm.com

6 2020
JUNE

MO TU WE TH FR SA SU MO TU WE TH FR SA SU MO TU WE TH FR SA SU MO TU WE TH FR SA SU MO TU
1 2 3 4 5 6 7 8 9 10 11 12 13 14 15 16 17 18 19 20 21 22 23 24 25 26 27 28 29 30

5 2020
MAY

S	M	T	W	T	F	S
					1	2
3	4	5	6	7	8	9
10	11	12	13	14	15	16
17	18	19	20	21	22	23
24	25	26	27	28	29	30
31						

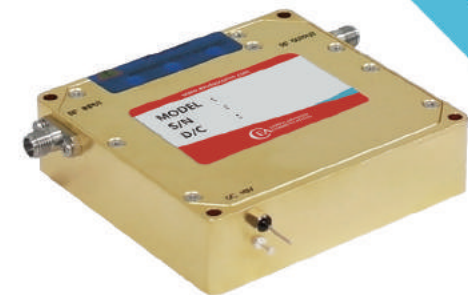
7 2020
JULY

S	M	T	W	T	F	S
			1	2	3	4
5	6	7	8	9	10	11
12	13	14	15	16	17	18
19	20	21	22	23	24	25
26	27	28	29	30	31	

6

JUNE

S	M	T	W	T	F	S
	1	2	3	4	5	6
7	8	9	10	11	12	13
14	15	16	17	18	19	20
21	22	23	24	25	26	27
28	29	30				



AMP2071A-LC



Features

- Class A/AB linear LDMOS design
- Instantaneous ultra-wide bandwidth
- Rack mounted system
- Designed for broadband EMI/RFI, Lab, Comm. and EW applications
- Suitable for all single channel modulation standards
- Built-in protection circuits
- High reliability and ruggedness

Operating Frequency Range
80MHz – 1000MHz

Output Power
750W Min.

Gain/Description
60dB Min.

Best in Class RF Amplifier SSPA's



www.exoduscomm.com

7 2020
JULY

WE TH FR SA SU MO TU WE TH FR SA SU MO TU WE TH FR SA SU MO TU WE TH FR
1 2 3 4 5 6 7 8 9 10 11 12 13 14 15 16 17 18 19 20 21 22 23 24 25 26 27 28 29 30 31

6 2020
JUNE

S	M	T	W	T	F	S
	1	2	3	4	5	6
7	8	9	10	11	12	13
14	15	16	17	18	19	20
21	22	23	24	25	26	27
28	29	30				

8 2020
AUGUST

S	M	T	W	T	F	S
						1
2	3	4	5	6	7	8
9	10	11	12	13	14	15
16	17	18	19	20	21	22
23 30	24 31	25	26	27	28	29

7
JULY

S	M	T	W	T	F	S
			1	2	3	Independence Day 4
5	6	7	8	9	10	11
12	13	14	15	16	17	18
19	20	21	22	23	24	25
26	27	28	29	30	31	



AMP2080E-1



Features

- Class A/AB linear LDMOS design
- Instantaneous ultra-wide bandwidth
- Rack mounted system
- Designed for broadband EMC-EMI/RFI, all Lab, Automotive & BCI applications
- Suitable for all single channel modulation standards
- Built-in protection circuits
- High reliability and ruggedness

Operating Frequency Range

10kHz – 100MHz

Output Power

1000W Min.

Gain/Description

60dB Min.

Best in Class RF Amplifier SSPA's



www.exoduscomm.com

8

2020
AUGUST

SA SU MO TU WE TH FR SA SU MO TU WE TH FR SA SU MO TU WE TH FR SA SU MO
1 2 3 4 5 6 7 8 9 10 11 12 13 14 15 16 17 18 19 20 21 22 23 24 25 26 27 28 29 30 31

7 2020 JULY

S	M	T	W	T	F	S
			1	2	3	4
5	6	7	8	9	10	11
12	13	14	15	16	17	18
19	20	21	22	23	24	25
26	27	28	29	30	31	

9 2020 SEPTEMBER

S	M	T	W	T	F	S
		1	2	3	4	5
6	7	8	9	10	11	12
13	14	15	16	17	18	19
20	21	22	23	24	25	26
27	28	29	30			

8

AUGUST

S	M	T	W	T	F	S
						1
2	3	4	5	6	7	8
9	10	11	12	13	14	15
16	17	18	19	20	21	22
23 30	24 31	25	26	27	28	29



AMP4045-MIL



Features

- Small, lightweight rack mounted system
- Solid State Class AB linear design
- Instantaneous wide bandwidth
- Suitable for all single channel and high PAR digital modulation standards
- Built-in protection circuits
- High reliability and ruggedness

Operating Frequency Range
960MHz – 1600MHz

Output Power
1000W Min.

Gain/Description
60dB Min.



Best in Class RF Amplifier SSPA's

www.exoduscomm.com

9

2020
SEPTEMBER

TU WE TH FR SA SU MO TU WE TH FR SA SU MO TU WE TH FR SA SU MO TU WE TH FR SA SU MO TU WE
1 2 3 4 5 6 7 8 9 10 11 12 13 14 15 16 17 18 19 20 21 22 23 24 25 26 27 28 29 30

8 2020
AUGUST

S	M	T	W	T	F	S
						1
2	3	4	5	6	7	8
9	10	11	12	13	14	15
16	17	18	19	20	21	22
23 30	24 31	25	26	27	28	29

10 2020
OCTOBER

S	M	T	W	T	F	S
				1	2	3
4	5	6	7	8	9	10
11	12	13	14	15	16	17
18	19	20	21	22	23	24
25	26	27	28	29	30	31

9

SEPTEMBER

S	M	T	W	T	F	S
		1	2	3	4	5
6	Labor Day 7	8	9	10	11	12
13	14	15	16	17	18	19
20	21	22	23	24	25	26
27	28	29	30			



AMP4065-LC



Features

- Class A/AB linear GaAsFET design
- Instantaneous wide bandwidth
- Designed for EMI/RFI, lab, and general communication applications
- Suitable for all single channel modulation standards
- Rack mounted system
- Local LCD & remote flexible interfaces
- High reliability and ruggedness

Operating Frequency Range
18.0GHz – 26.5GHz

Output Power
40W Min.

Gain/Description
46dB Min.

Best in Class RF Amplifier SSPA's



www.exoduscomm.com

10 2020
OCTOBER

TH FR SA SU MO TU WE TH FR SA SU MO TU WE TH FR SA SU MO TU WE TH FR SA SU MO TU WE TH FR SA
1 2 3 4 5 6 7 8 9 10 11 12 13 14 15 16 17 18 19 20 21 22 23 24 25 26 27 28 29 30 31

9 2020
SEPTEMBER

S	M	T	W	T	F	S
		1	2	3	4	5
6	7	8	9	10	11	12
13	14	15	16	17	18	19
20	21	22	23	24	25	26
27	28	29	30			

11 2020
NOVEMBER

S	M	T	W	T	F	S
1	2	3	4	5	6	7
8	9	10	11	12	13	14
15	16	17	18	19	20	21
22	23	24	25	26	27	28
29	30					

10

OCTOBER

S	M	T	W	T	F	S
				1	2	3
4	5	6	7	8	9	10
11	Columbus Day 12	13	14	15	16	17
18	19	20	21	22	23	24
25	26	27	28	29	30	31



AMP2135B-1



Features

- Class A/AB linear LDMOS design
- Instantaneous ultra-wide bandwidth
- Rack mounted system
- Designed for broadband EMI/RFI, Lab, BCI applications
- Suitable for all single channel modulation standards
- Built-in protection circuits
- High reliability and ruggedness

Operating Frequency Range

10kHz – 400MHz

Output Power

150W Min.

Gain/Description

52dB Min.



Best in Class RF Amplifier SSPA's

www.exoduscomm.com

11 2020
NOVEMBER

SU MO TU WE TH FR SA SU MO TU WE TH FR SA SU MO TU WE TH FR SA SU MO
1 2 3 4 5 6 7 8 9 10 11 12 13 14 15 16 17 18 19 20 21 22 23 24 25 26 27 28 29 30

10 2020 OCTOBER

S	M	T	W	T	F	S
				1	2	3
4	5	6	7	8	9	10
11	12	13	14	15	16	17
18	19	20	21	22	23	24
25	26	27	28	29	30	31

12 2020 DECEMBER

S	M	T	W	T	F	S
		1	2	3	4	5
6	7	8	9	10	11	12
13	14	15	16	17	18	19
20	21	22	23	24	25	26
27	28	29	30	31		

11

NOVEMBER

S	M	T	W	T	F	S
1	2	3	4	5	6	7
8	9	10	Veterans Day 11	12	13	14
15	16	17	18	19	20	21
22	23	24	25	Thanksgiving Day 26	27	28
29	30					



AMP2083P-2KW



Features

- Rack mountable chassis
- Class AB linear GaN design
- Instantaneous C-Band bandwidth
- Suitable for high power pulse applications
- Built-in control, monitoring and protection circuits
- Versatile interface options
- High reliability SSPA and ruggedness for harsh environmental installations

Operating Frequency Range
4.0GHz – 8.0GHz

Output Power
2KW Pulse

Gain/Description
63dB Min.

Best in Class RF Amplifier SSPA's



www.exoduscomm.com

12 2020
DECEMBER

TU WE TH FR SA SU MO TU WE TH FR SA SU MO TU WE TH FR SA SU MO TU WE TH FR SA SU MO TU WE TH
1 2 3 4 5 6 7 8 9 10 11 12 13 14 15 16 17 18 19 20 21 22 23 24 25 26 27 28 29 30 31

11 2020
NOVEMBER

S	M	T	W	T	F	S
1	2	3	4	5	6	7
8	9	10	11	12	13	14
15	16	17	18	19	20	21
22	23	24	25	26	27	28
29	30					

1 2021
JANUARY

S	M	T	W	T	F	S
					1	2
3	4	5	6	7	8	9
10	11	12	13	14	15	16
17	18	19	20	21	22	23
24 31	25	26	27	28	29	30

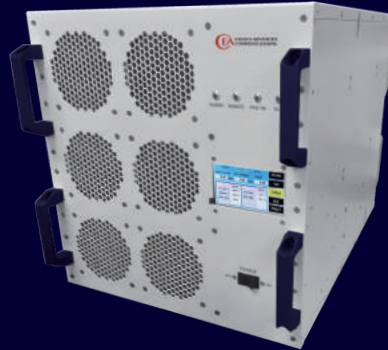
12

DECEMBER

S	M	T	W	T	F	S
		1	2	3	4	5
6	7	8	9	10	11	12
13	14	15	16	17	18	19
20	21	22	23	24	Christmas Day 25	26
27	28	29	30	31		



AMP2136-2-4-8KP



Features

- Rack mounted system (2 x 4KW Pulse Drawers rack integrated)
- Class AB linear GaN design
- Instantaneous S-Band bandwidth
- Suitable for high power pulse applications
- Built-in control, monitoring and protection circuits
- Versatile interface options
- Rack configured for 8KW with both 4KW pulse drawers installed
- High reliability and ruggedness

Operating Frequency Range

2.0GHz – 4.0GHz

Output Power

2KW, 4KW & 8KW Pulse

Gain/Description

69dB Min.



Best in Class RF Amplifier SSPA's

www.exoduscomm.com

1 2021
JANUARY

FR SA SU MO TU WE TH FR SA SU MO TU WE TH FR SA SU MO TU WE TH FR SA SU
1 2 3 4 5 6 7 8 9 10 11 12 13 14 15 16 17 18 19 20 21 22 23 24 25 26 27 28 29 30 31

12 2020
DECEMBER

S	M	T	W	T	F	S
		1	2	3	4	5
6	7	8	9	10	11	12
13	14	15	16	17	18	19
20	21	22	23	24	25	26
27	28	29	30	31		

2 2021
FEBRUARY

S	M	T	W	T	F	S
	1	2	3	4	5	6
7	8	9	10	11	12	13
14	15	16	17	18	19	20
21	22	23	24	25	26	27
28						

JANUARY

S	M	T	W	T	F	S
					New Year's Day 1	2
3	4	5	6	7	8	9
10	11	12	13	14	15	16
17	Martin Luther King Day 18	19	20	21	22	23
24 31	25	26	27	28	29	30



2020

www.exoduscomm.com

1 January

S	M	T	W	T	F	S
				1	2	3
4	5	6	7	8	9	10
11	12	13	14	15	16	17
18	19	20	21	22	23	24
25	26	27	28	29	30	31

2 February

S	M	T	W	T	F	S
						1
2	3	4	5	6	7	8
9	10	11	12	13	14	15
16	17	18	19	20	21	22
23	24	25	26	27	28	29

3 March

S	M	T	W	T	F	S
1	2	3	4	5	6	7
8	9	10	11	12	13	14
15	16	17	18	19	20	21
22	23	24	25	26	27	28
29	30	31				

4 April

S	M	T	W	T	F	S
				1	2	3
4	5	6	7	8	9	10
11	12	13	14	15	16	17
18	19	20	21	22	23	24
25	26	27	28	29	30	

5 May

S	M	T	W	T	F	S
					1	2
3	4	5	6	7	8	9
10	11	12	13	14	15	16
17	18	19	20	21	22	23
24	25	26	27	28	29	30
31						

6 June

S	M	T	W	T	F	S
		1	2	3	4	5
6	7	8	9	10	11	12
13	14	15	16	17	18	19
20	21	22	23	24	25	26
27	28	29	30			

7 July

S	M	T	W	T	F	S
				1	2	3
4	5	6	7	8	9	10
11	12	13	14	15	16	17
18	19	20	21	22	23	24
25	26	27	28	29	30	31

8 August

S	M	T	W	T	F	S
						1
2	3	4	5	6	7	8
9	10	11	12	13	14	15
16	17	18	19	20	21	22
23	24	25	26	27	28	29
30	31					

9 September

S	M	T	W	T	F	S
		1	2	3	4	5
6	7	8	9	10	11	12
13	14	15	16	17	18	19
20	21	22	23	24	25	26
27	28	29	30			

10 October

S	M	T	W	T	F	S
				1	2	3
4	5	6	7	8	9	10
11	12	13	14	15	16	17
18	19	20	21	22	23	24
25	26	27	28	29	30	31

11 November

S	M	T	W	T	F	S
1	2	3	4	5	6	7
8	9	10	11	12	13	14
15	16	17	18	19	20	21
22	23	24	25	26	27	28
29	30					

12 December

S	M	T	W	T	F	S
			1	2	3	4
5	6	7	8	9	10	11
12	13	14	15	16	17	18
19	20	21	22	23	24	25
26	27	28	29	30	31	