



TDP SERIES

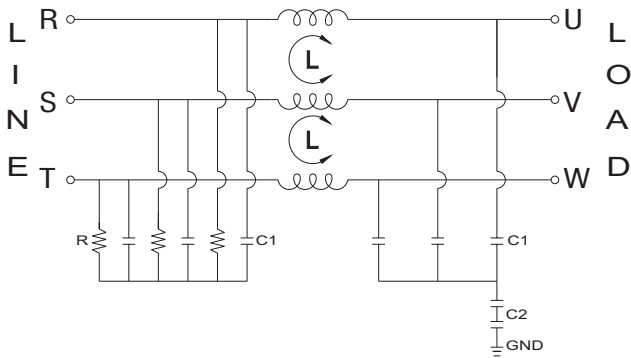
HIGH PERFORMANCE 3-PHASE 3-WIRE PLASTIC CASE FILTERS



COMPONENTS

PART NO.	L (mH)	Cx (uF)	Cy (uF)	R (MΩ)
04TDPS6/(D)	40.0	0.22	0.068	1.0
06TDPS6/(D)	23.0			
10TDPS6/(D)	10.0			
16TDPS6/(D)	4.3			
20TDPS6/(D)	2.5			
30TDPS6/(D)	1.2			
10TDPS6E/(D)	46.3			
16TDPS6E/(D)	25.3	0.22	0.068	1.0
20TDPS6E/(D)	14.8			
30TDPS6E/(D)	7.1			

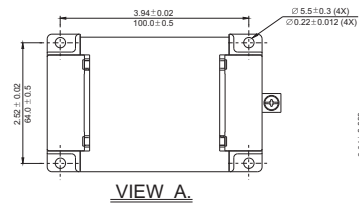
ELECTRICAL SCHEMATIC



MECHANICAL CONSTRUCTION

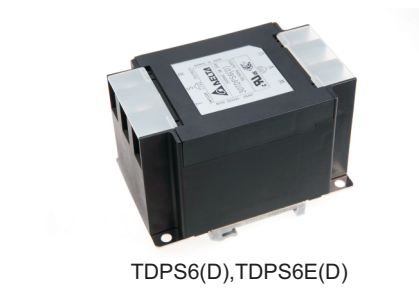
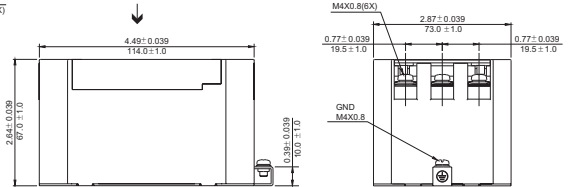


TDPS6, TDPS6E

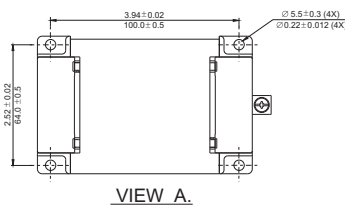


VIEW A.

VIEW A.

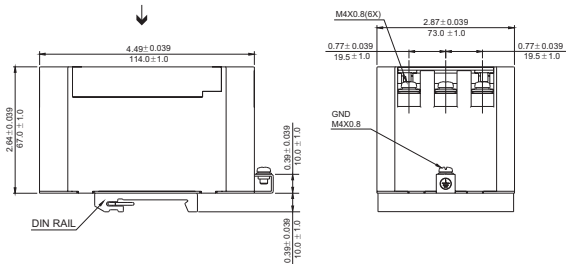


TDPS6(D), TDPS6E(D)



VIEW A.

VIEW A.



INTRODUCTIONS

1. Mainly industrial equipment, machinery, machine tools, robot arm controller and diverse process automation system.
2. Wide range of Y capacitance from 0 ~ 0.68uF for option.
3. Competitive design and easily connected with system.
4. Captive hinged protect cover.
5. Low leakage current models for option type for option.
6. Compacted size and DIN-rail installation.
7. RoHS compliant.

MINIMUM INSERTION LOSS IN dB

COMMONMODE(L-G)IN50OHMSYSTEM							
TYPE	CURRENT RATING	FREQUENCY -MHz					
		.15	.50	1.0	5.0	10	30
04TDPS6/(D)	04A	50	50	60	45	30	10
06TDPS6/(D)	06A	40	40	40	40	35	5
10TDPS6/(D)	10A	35	40	40	30	20	5
16TDPS6/(D)	16A	25	35	40	40	25	10
20TDPS6/(D)	20A	20	35	35	35	25	5
30TDPS6/(D)	30A	18	30	35	40	25	10
10TDPS6E/(D)	10A	35	40	40	40	25	10
16TDPS6E/(D)	16A	30	40	45	40	25	10
20TDPS6E/(D)	20A	28	35	40	40	35	10
30TDPS6E/(D)	30A	20	35	40	40	30	10
DIFFERENTIALMODE(L-L)IN50OHMSYSTEM							
04TDPS6/(D)	04A	50	50	50	55	50	20
06TDPS6/(D)	06A	55	50	50	55	55	15
10TDPS6/(D)	10A	50	50	45	40	35	20
16TDPS6/(D)	16A	40	50	50	45	45	25
20TDPS6/(D)	20A	25	25	30	45	45	15
30TDPS6/(D)	30A	30	40	40	45	40	20
10TDPS6E/(D)	10A	45	45	60	50	50	20
16TDPS6E/(D)	16A	40	45	55	50	45	20
20TDPS6E/(D)	20A	40	55	60	55	50	20
30TDPS6E/(D)	30A	30	45	50	45	45	30



TDSS SERIES

HIGH PERFORMANCE EMC/RFI FILTER



COMPONENTS

PART NO.	L (mH)	Cx (uF)	Cy (uF)	R (MΩ)
10TDSS6/(DI)	0.7	3.3	0.068	0.68
20TDSS6/(DI)	1.5			
30TDSS6/(DI)	3.0			
10TDSS6-H/(DI)	0.7	3.3	0.47	0.68
20TDSS6-H/(DI)	1.5			
30TDSS6-H/(DI)	3.0			

REMARK : (DI) IS DIN RAIL OPTION.

INTRODUCTIONS

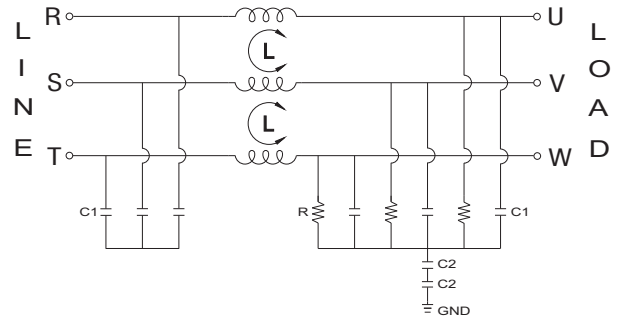
1. Mainly industrial equipment, machinery, machine tools, robot arm controller and diverse process automation system.
2. Wide range of application and available for customer design.
3. Competitive design and easily connected with system.
4. Captive hinged protect cover.
5. Very low leakage current value.
6. Compacted size and DIN-rail installation.
7. IP54 standard Solid/Liquid protection.
8. RoHS compliant.

MINIMUM INSERTION LOSS IN dB

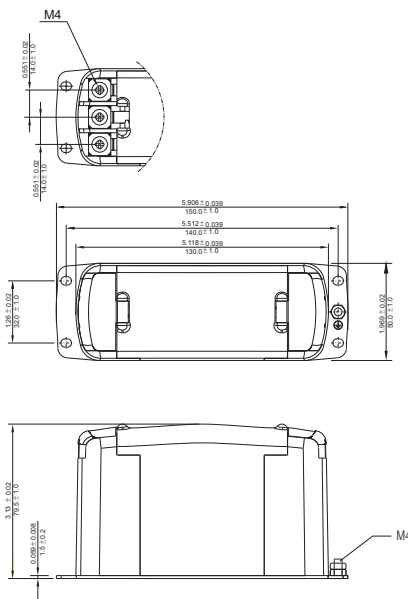
COMMONMODE(L-G)IN50OHMSYSTEM							
TYPE	CURRENT RATING	FREQUENCY -MHz					
		.15	.50	1.0	5.0	10	30
10TDSS6/(DI)	10A	25	40	45	50	35	15
20TDSS6/(DI)	20A	20	40	40	50	30	10
30TDSS6/(DI)	30A	15	30	35	50	30	15
10TDSS6-H/(DI)	10A	40	60	65	45	35	15
20TDSS6-H/(DI)	20A	35	55	65	40	30	10
30TDSS6-H/(DI)	30A	30	50	60	40	30	10

DIFFERENTIALMODE(L-L)IN50OHMSYSTEM							
TYPE	CURRENT RATING	FREQUENCY -MHz					
		.15	.50	1.0	5.0	10	30
10TDSS6/(DI)	10A	50	50	50	30	28	38
20TDSS6/(DI)	20A	48	50	48	35	35	20
30TDSS6/(DI)	30A	40	50	50	30	28	28
10TDSS6-H/(DI)	10A	50	40	45	30	25	35
20TDSS6-H/(DI)	20A	50	50	45	35	35	25
30TDSS6-H/(DI)	30A	40	40	45	40	40	20

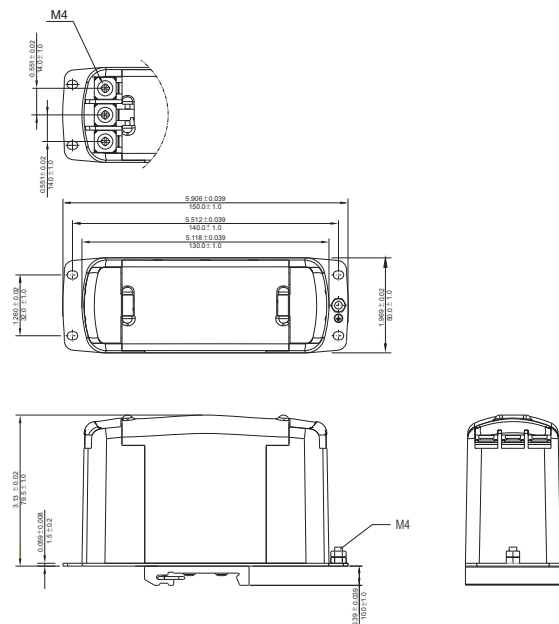
ELECTRICAL SCHEMATIC



MECHANICAL CONSTRUCTION



TDSS6, TDPSS6-H



TDSS6(DI), TDSS6-H(DI)

TDV SERIES VERTICAL 3-PHASE 3-WIRE FILTERS

COMPONENTS

PART No.	Cx1(uF)	Cx2(uF)	Cy(uF)	L(mH)	R1(M.Ω)	R2(M.Ω)
07TDVST2	4.4	2.2	2.2	2.52	1.0	0.68
16TDVST2				1.70		
30TDVST2				1.00		
42TDVST2		0.60				
55TDVST2		0.60				
75TDVST2	6.6	6.6		0.45		
100TDVST2			0.30	1.5		

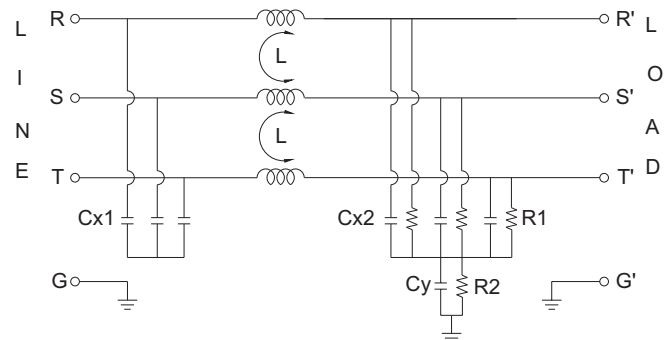
MINIMUM INSERTION LOSS IN dB

COMMONMODE(L-G) IN 50 OHM SYSTEM						
PART NO.	FREQUENCY-MHz					
	.15	.50	1.0	5.0	10	30
07TDVST2	50	70	65	50	40	20
16TDVST2	50	50	50	45	30	20
30TDVST2	50	55	50	45	30	15
42TDVST2	45	50	50	30	25	10
55TDVST2	45	60	55	35	30	10
75TDVST2	40	55	50	25	18	7
100TDVST2	35	50	45	25	15	7
DIFFERENTIALMODE(L-L) IN 50 OHM SYSTEM						
07TDVST2	45	60	70	50	40	40
16TDVST2	45	45	50	40	35	30
30TDVST2	45	45	45	45	45	25
42TDVST2	35	50	50	40	40	20
55TDVST2	40	55	55	50	50	20
75TDVST2	40	45	45	40	40	5
100TDVST2	30	35	35	35	30	7

INTRODUCTIONS

1. Applications: Electric equipment, UPS, machine tool, copy machine, automation equipment, robot, AC motor drive
2. Voltage rating: 480VAC
3. Operating frequency: 50/60Hz

ELECTRICAL SCHEMATIC

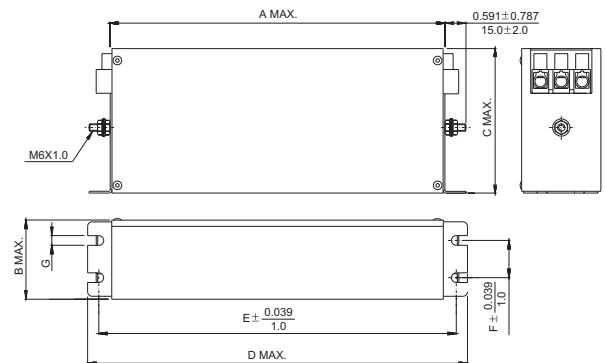


MECHANICAL CONSTRUCTION



SERIES DIMENSIONS

PART NO.	DIMENSIONS IN INCHES/mm						
	A	B	C	D	E	F	G
07TDVST2	6.378	1.654	2.835	7.559	7.087	0.787	0.213 5.4
	162.0	42.0		192.0	180.0	20.0	
16TDVST2	8.740	1.850	72.0	9.921	9.252	0.984	
	222.0	47.0	252.0	235.0	25.0		
30TDVST2	9.528	2.047	3.425	10.709	10.039	1.181	
	242.0			272.0	255.0		
42TDVST2	11.102	52.0	87.0	12.283	11.614	30.0	
	282.0		312.0	295.0			
55TDVST2	8.740	3.425	3.622	9.921	9.252	2.362	
	222.0	87.0	92.0	252.0	235.0		
75TDVST2	9.528	3.622	5.394	10.709	10.039	60.0	
	242.0	92.0	137.0	272.0	255.0	0.256	
100TDVST2	9.449	3.543	5.906	10.63	10.039	2.559	
	240.0	90.0	150.0	270.0	255.0	65.0	



UNIT: INCH
mm

COMPONENTS

PARTNo.	Cx1 (uF)	Cx2 (uF)	Cx3 (uF)	Cy (uF)	L1 (mH)	L2 (uH)	R1 (MΩ)	R2 (MΩ)
07TDVST2-1	3.3	3.3	-	3.3	2.52	4.5	1M	680K
16TDVST2-1		2.2	3.3		1.77	9		
30TDVST2-1		10	3.3		-		1.1	
42TDVST2-1	0.6							
55TDVST2-1	1.3							
100TDVST2-1	0.9							
130TDVST2-1	0.5							
180TDVST2-1	0.4	-	-					

INTRODUCTIONS

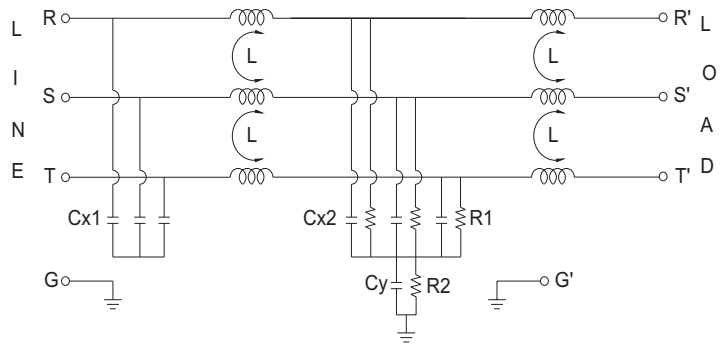
1. Applications: Electric equipment, UPS, machine tool, copy machine, automation equipment, robot, AC motor drive
2. Voltage rating: 480VAC
3. Operating frequency: 50/60Hz

MINIMUM INSERTION LOSS IN dB

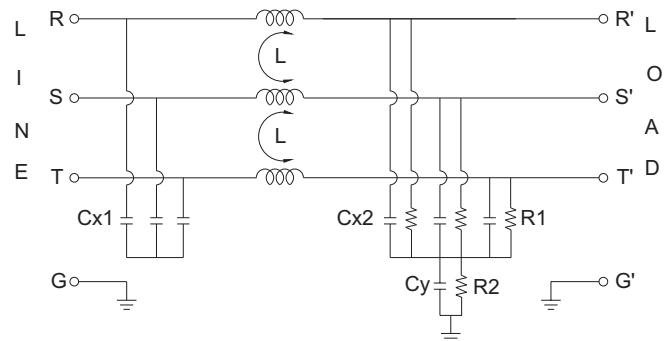
COMMONMODE(L-G) IN 50 OHM SYSTEM							
PART NO.	FREQUENCY-MHz						
	.15	.50	1.0	5.0	10	30	
07TDVST2-1	55	70	60	45	30	15	
16TDVST2-1	50	65	55	40	35	20	
30TDVST2-1	50	60	55	35	35	10	
42TDVST2-1	50	55	50	30	20	10	
55TDVST2-1	55	65	50	30	20	5	
100TDVST2-1	50	65	50	20	10	5	
130TDVST2-1	45	65	50	35	15	5	
180TDVST2-1	40	60	45	30	20	5	

DIFFERENTIALMODE(L-L) IN 50 OHM SYSTEM							
PART NO.	FREQUENCY-MHz						
	.15	.50	1.0	5.0	10	30	
07TDVST2-1	45	50	45	40	40	20	
16TDVST2-1	55	55	50	40	40	35	
30TDVST2-1	45	40	35	35	35	20	
42TDVST2-1	55	40	30	20	20	10	
55TDVST2-1	60	55	45	40	35	5	
100TDVST2-1	50	50	45	35	25	5	
130TDVST2-1	40	55	45	30	30	5	
180TDVST2-1	45	40	35	20	20	10	

ELECTRICAL SCHEMATIC



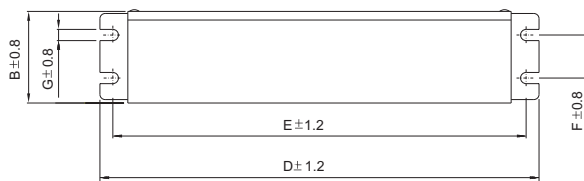
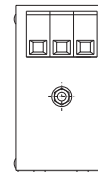
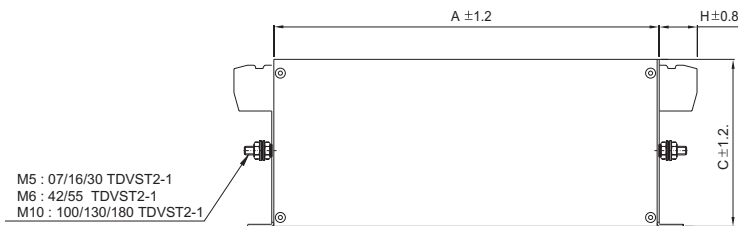
07/16/30/42/55/100/130TDVST2-1



180TDVST2-1 ONLY

SERIES DIMENSIONS

PARTNO.	DIMENSIONS IN INCHES/mm							
	A	B	C	D	E	F	G	H
07TDVST2-1	$\frac{7.48}{190.0}$	$\frac{1.575}{40.0}$	$\frac{2.756}{70.0}$	$\frac{6.299}{160.0}$	$\frac{7.087}{180.0}$	$\frac{0.787}{20.0}$	$\frac{0.177}{4.5}$	$\frac{0.965}{24.5}$
16TDVST2-1	$\frac{9.843}{250.0}$	$\frac{1.772}{45.0}$		$\frac{8.661}{220.0}$	$\frac{9.252}{235.0}$	$\frac{0.984}{25.0}$	$\frac{0.213}{5.4}$	
30TDVST2-1	$\frac{10.63}{270.0}$	$\frac{1.969}{50.0}$	$\frac{3.346}{85.0}$	$\frac{9.449}{240.0}$	$\frac{10.039}{255.0}$	$\frac{1.181}{30.0}$		
42TDVST2-1	$\frac{12.205}{310.0}$	$\frac{50.0}{100.0}$	$\frac{3.543}{90.0}$	$\frac{8.661}{220.0}$	$\frac{9.252}{235.0}$	$\frac{2.362}{60.0}$		
55TDVST2-1	$\frac{9.843}{250.0}$	$\frac{3.927}{100.0}$	$\frac{3.543}{90.0}$	$\frac{8.661}{220.0}$	$\frac{9.252}{235.0}$	$\frac{2.362}{60.0}$	$\frac{0.256}{6.5}$	$\frac{1.516}{38.5}$
100TDVST2-1	$\frac{10.63}{270.0}$	$\frac{4.331}{110.0}$	$\frac{5.906}{150.0}$	$\frac{9.449}{240.0}$	$\frac{10.039}{255.0}$	$\frac{2.559}{65.0}$	$\frac{0.256}{6.5}$	$\frac{1.693}{43.0}$
130TDVST2-1	$\frac{14.961}{380.0}$	$\frac{5.512}{140.0}$	$\frac{6.693}{170.0}$	$\frac{13.78}{350.0}$	$\frac{14.37}{365.0}$	$\frac{4.016}{102.0}$		$\frac{1.949}{49.5}$
180TDVST2-1								



UNIT: $\frac{\text{INCH}}{\text{mm}}$

MECHANICAL CONSTRUCTION





TY SERIES

COMPACT 3-PHASE 4-WIRE FILTERS



COMPONENT

PART NO.	L(mH)	Cx(uF)	Cy(pF)
10TYG9	0.3	0.1	4700
* 20TYS9	0.15		22000

*UL approved 250 VAC.

INTRODUCTIONS

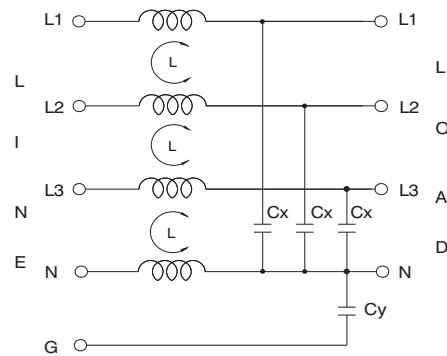
1. Applications: Electric equipment, UPS, machine tool, copy machine, automation equipment, robot, AC motor drive
2. Voltage rating: 440VAC
3. Operating frequency: 50/60Hz

MINIMUM INSERTION LOSS IN dB

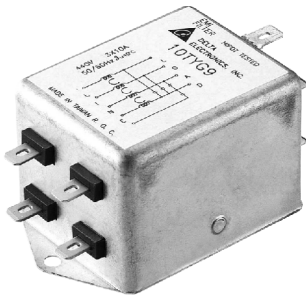
COMMONMODE(L-G)IN50OHMSYSTEM			FREQUENCY_MHz					
TYPE	CURRENT RATING		.15	.50	1.0	5.0	10	30
10TYG9	10A	10	20	20	20	30	30	25
20TYS9	20A	10	15	20	35	40	25	25

DIFFERENTIALMODE(L-L)IN50OHMSYSTEM			FREQUENCY_MHz					
TYPE	CURRENT RATING		.15	.50	1.0	5.0	10	30
10TYG9	10A	10	20	25	25	30	30	30
20TYS9	20A	10	15	20	20	25	25	20

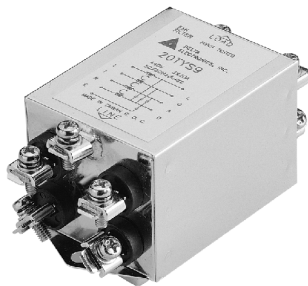
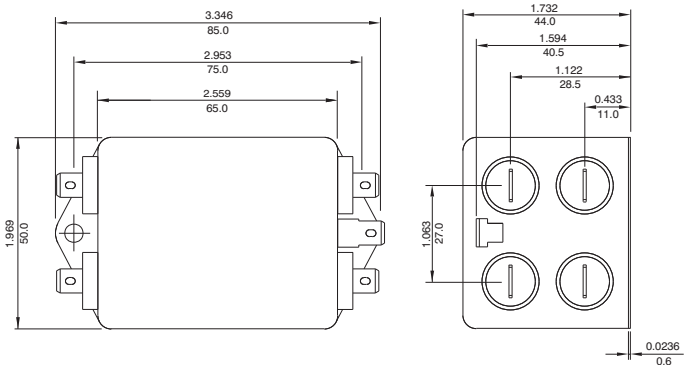
ELECTRICAL SCHEMATIC



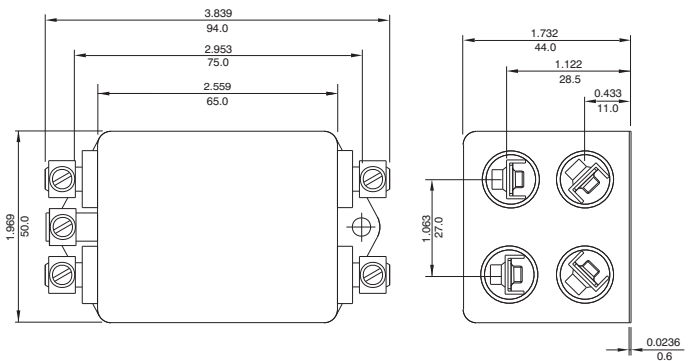
MECHANICAL CONSTRUCTION



10TYG9



20TYS9



UNIT: INCH
mm



TYT SERIES

HIGH PERFORMANCE 3-PHASE 4-WIRE FILTERS



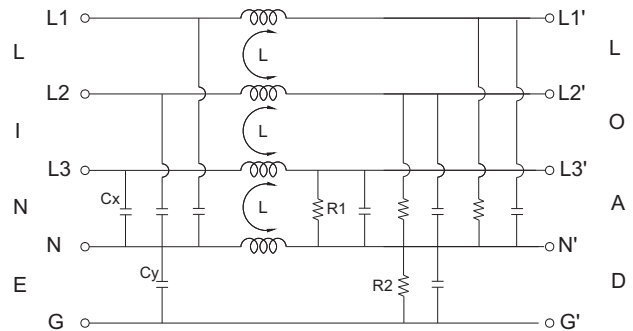
INTRODUCTIONS

1. Applications: Electric equipment, UPS, machine tool, copy machine, automation equipment, robot, AC motor drive
2. Voltage rating: 520VAC
3. Operating frequency: 50/60Hz

COMPONENTS

PARTNO.	L(mH)	Cx(uF)	Cy(uF)	R1 (Ω)	R2 (KΩ)
08TYT8-1	2.4	2.2	0.1	1.5M	680
16TYT8-1	1.7				
25TYT8-1	1.6	4.7	0.147	330K	680
36TYT8-1	1.0				
64TYT8-1	0.7	9.4	0.147	330K	680
80TYT8-1	0.55				
120TYT8-1	0.55	13.6	0.147	330K	680
160TYT8-1	0.5				

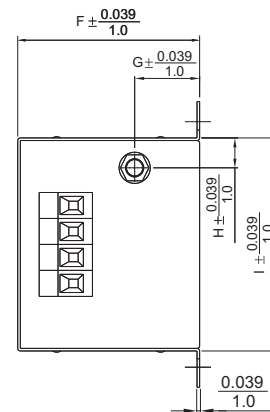
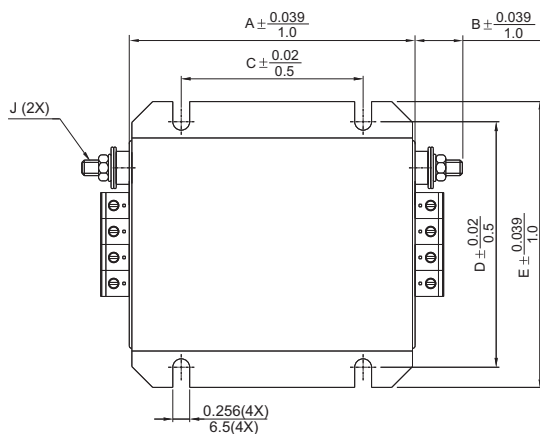
ELECTRICAL SCHEMATIC



SERIES DIMENSIONS

PART NO.	DIMENSIONS IN INCHES/mm									
	A	B	C	D	E	F	G	H	I	J
08TYT8-1	4.33	0.45	3.15	3.72	4.33	2.76	0.98 25.0	0.47	3.23	M6
16TYT8-1	110.0	11.5	80.0	94.5	110.0	70.0		12.0	82.0	
25TYT8-1	5.12	0.96	3.54	4.02	4.65	3.35	0.98 25.0	0.55	3.54	M10
36TYT8-1	130.0	24.5	90.0	102.0	118.0	85.0		14.0	90.0	
64TYT8-1	5.51	1.52	3.94	5.02	5.63	4.53	1.57	0.71	4.53	M10
80TYT8-1	140.0	38.5	100.0	127.5	143.0	115.0	40.0	115.0		
80TYT8-1	6.69	1.69	4.72	5.81	6.42	4.92	1.38	18.0	5.31	M10
120TYT8-1	170.0	43.0	120.0	147.5	163.0	125.0	35.0	17.5	135.0	
120TYT8-1	8.27	1.95	6.3	6.04	6.69	5.12	1.73	0.69	5.51	M10
160TYT8-1	210.0	49.5	160.0	153.5	170.0	130.0	44.0	17.5	140.0	
160TYT8-1	7.87	1.95	5.91	6.81	7.48	5.12	2.17	0.65	6.3	M10
160TYT8-1	200.0	49.5	150.0	173.0	190.0	130.0	55.0	16.5	160.0	

MECHANICAL CONSTRUCTION





TYTSERIES

HIGH PERFORMANCE 2-STAGE 3-PHASE 4-WIRE FILTERS



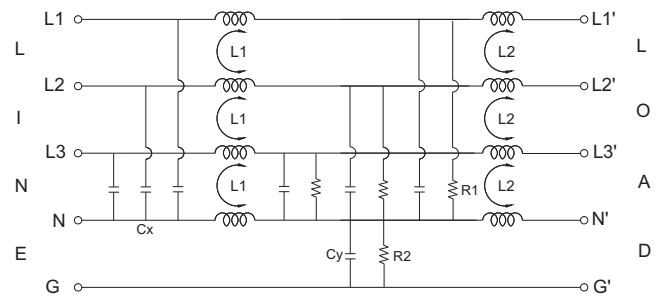
INTRODUCTIONS

1. Applications: Electric equipment, UPS, machine tool, copy machine, automation equipment, robot, AC motor drive
2. Voltage rating: 520VAC
3. Operating frequency: 50/60Hz

COMPONENTS

PARTNO.	L1(mH)	L2(uH)	Cx(uF)	Cy(uF)	R1(M Ω)	R2(KΩ)
08TYT8-2	2.4	7.0	3.3	3.4	1.5	660.0
16TYT8-2	1.7					
25TYT8-2	1.6	6.0	4.7			
36TYT8-2	1.0					
64TYT8-2	0.7	7.0	9.4			
80TYT8-2	0.55					
120TYT8-2	0.55	6.0	13.6			
160TYT8-2	0.5					

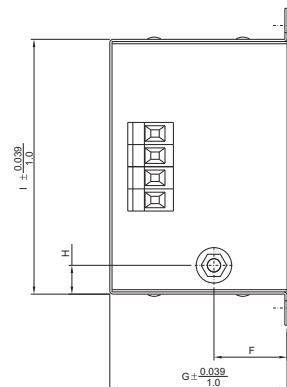
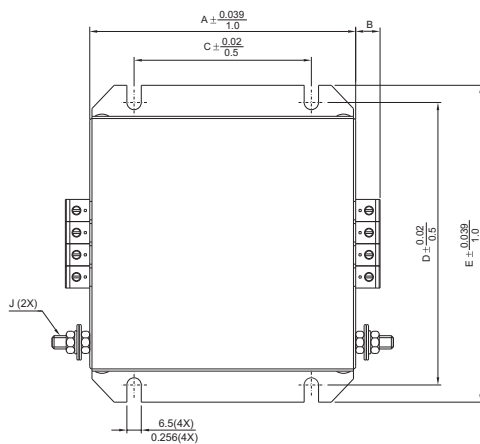
ELECTRICAL SCHEMATIC



SERIES DIMENSIONS

PART NO.	DIMENSIONS IN INCHES/mm										
	A	B	C	D	E	F	G	H	I	J	
08TYT8-2	4.72	0.45	3.15	5.02	5.63	1.3	3.15	0.51 13.0	4.53	M6	
16TYT8-2	120.0	11.5	80.0	127.5	143.0	33.0	80.0		115.0		
25TYT8-2	5.12	0.98	3.54	5.41 137.5	6.02 153.0	1.97	4.53	4.92 125.0			
36TYT8-2	130.0	25.0	90.0			50.0	115.0				
64TYT8-2	6.3	1.54	3.94	5.81 147.5	6.42 163.0	2.17	4.92 125.0	0.77	M10		
80TYT8-2	9.06	1.73	4.72			1.77		45.0			19.5
120TYT8-2	9.84	44.0	7.87	6.04 153.5	6.69 170.0	2.17	5.51	0.75 19.0			5.51 140.0
160TYT8-2	11.02	2.0	9.06			1.97	50.0				

MECHANICAL CONSTRUCTION



UNIT: INCH/mm