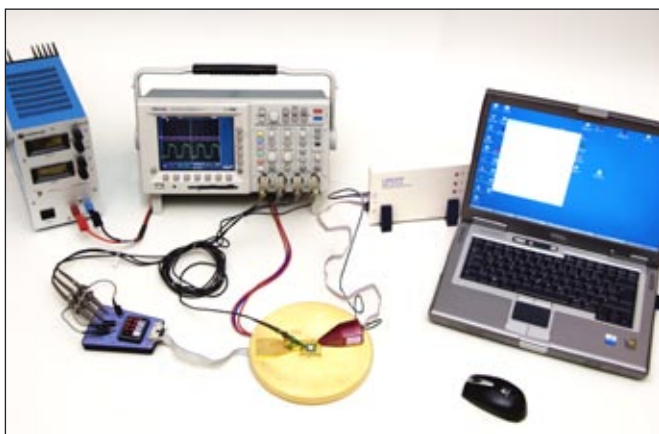
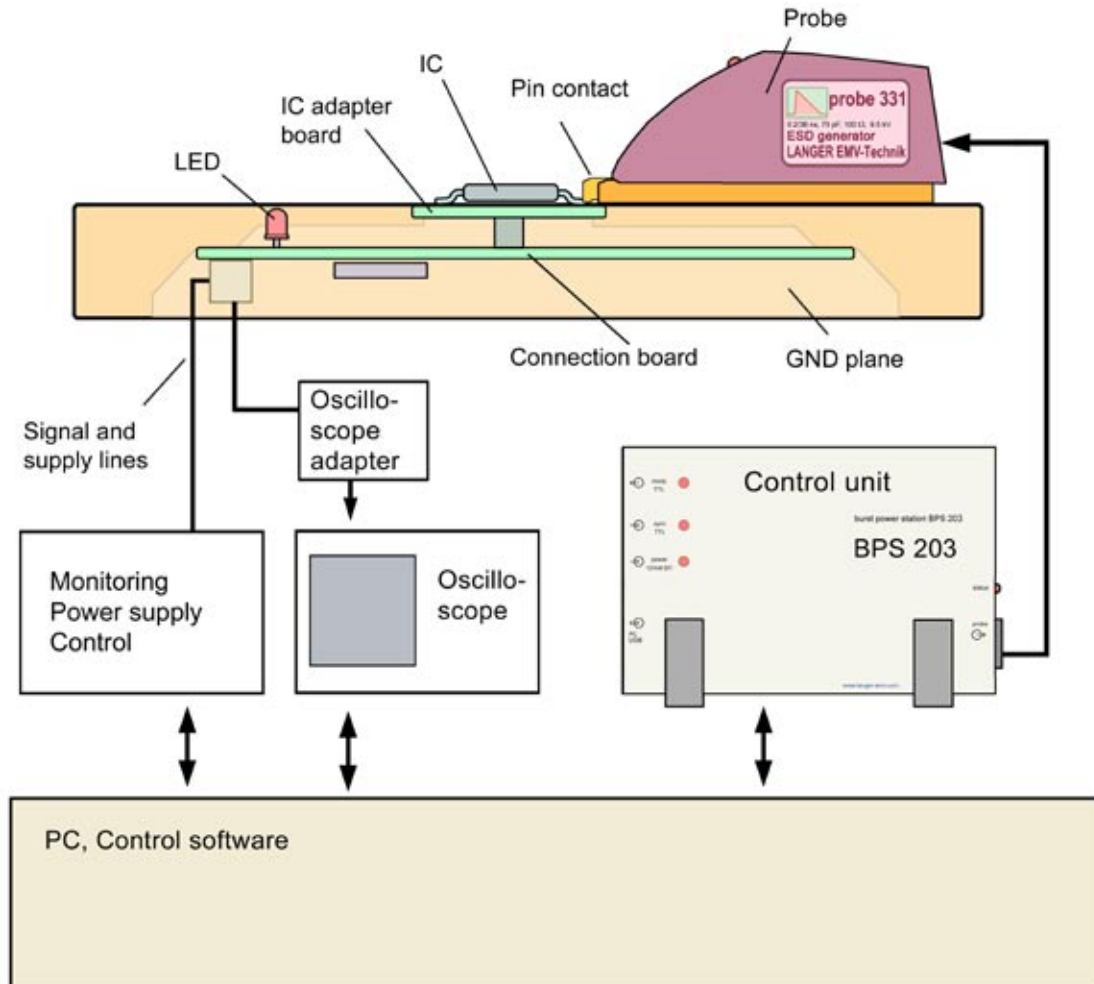


Measurements based on standard:
- IEC 61000-4-2



Measurement set-up consisting of:

- Probe
- Control unit BPS 203
- GND plane
- Connection board CB 0708
- PC with „BPS203_Client“ software



ESD coupling (IEC 61000-4-2)

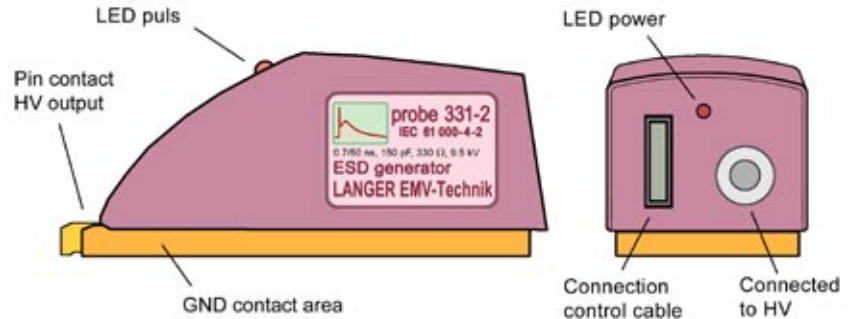
Application:

Conducted ESD coupling according IEC 61000-4-2 into the IC pin or in touch with coupler to inject in interface pin, specific high speed interfaces like USB, LVDS, Ethernet etc..

Properties:

ESD pulse (see figure pulse shape below)

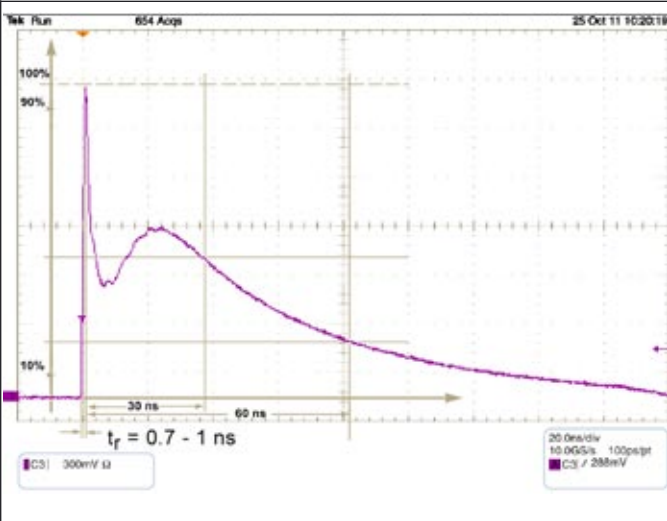
- the probe is operated with the BPS 203
- controlled via a PC user interface



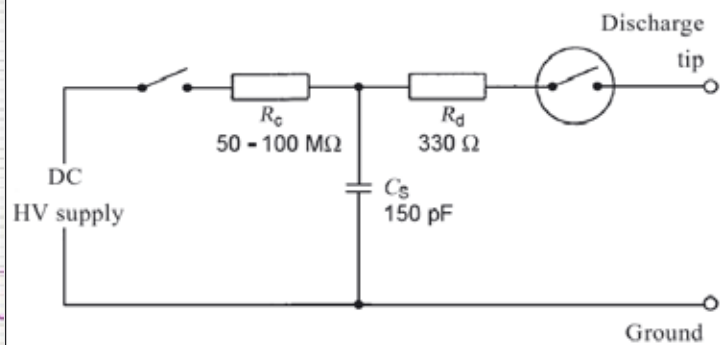
Pulse voltage	$\pm 0.1 - 9.5 \text{ kV}$
Pulse frequency	$0.1 - 10 \text{ Hz}$
Pulse shape	$0.7 / 60 \text{ ns}$
Energy storage capacitance	150 pF
Discharge resistance	$330 \text{ }\Omega$

The probe 331-2 is only operated with the BPS 203 control station.

Pulse shape (IEC 61000-4-2)



Equivalent circuit





ESD Einkopplung

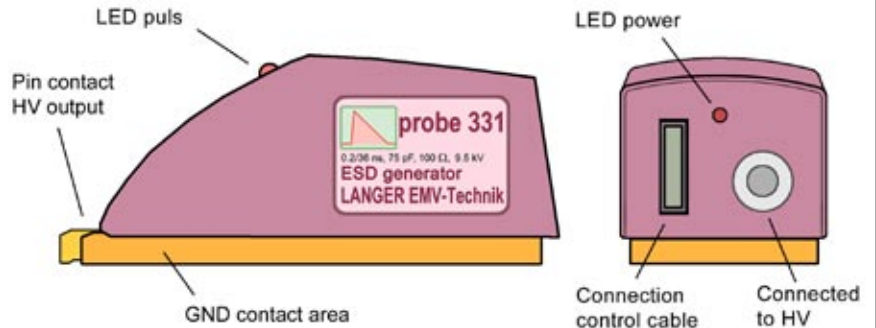
Application:

Conducted coupling into the IC pin or in touch with coupler to inject in interface pin, specific high speed interfaces like USB, LVDS, Ethernet etc..

Properties:

ESD pulse (see figure pulse shape below)

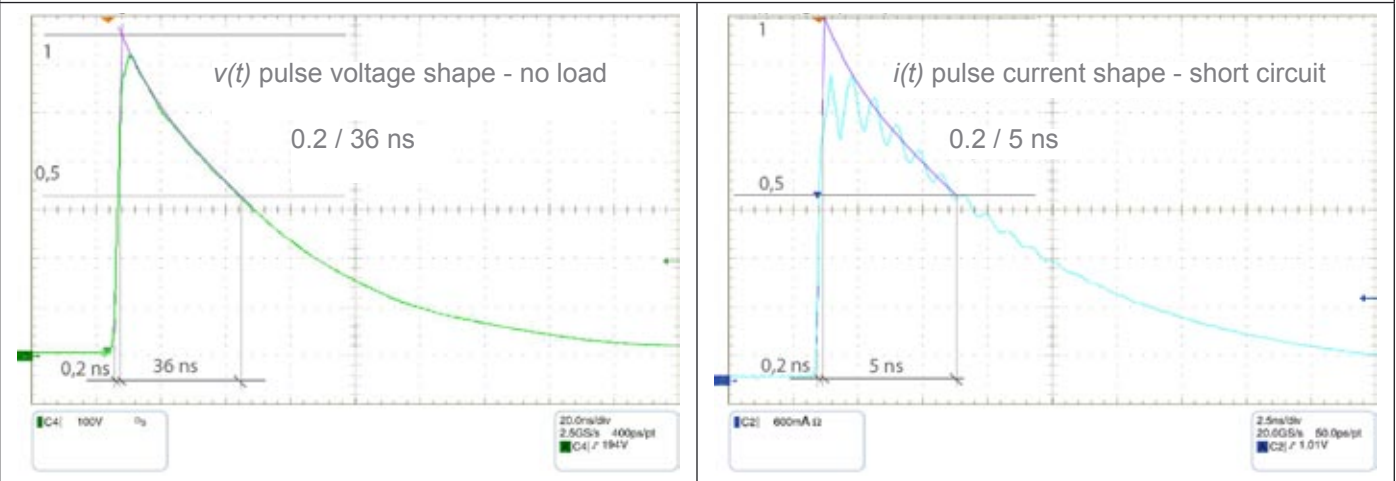
- the probe is operated with the BPS 203
- controlled via a PC user interface



Pulse voltage	$\pm 0.1 - 9.5 \text{ kV}$
Pulse frequency	$0.1 - 10 \text{ Hz}$
Pulse shape	$0.2 / 36 \text{ ns}$
Energy storage capacitance	75 pF
Internal resistance	100Ω

The probe 331 is only operated with the BPS 203 control station.

Pulse shape



Burst power station for ESD probes

Application:

The BPS 203 is used together with the ESD probes P331 and P331-2. (plus 3.5: P1202, P1202-2, P1301)

Properties:

It supplies and drives the ESD probes.

The BPS 203 is connected to the PC via USB and supported by Software „BPS203_Client“.

- regulate the pulse frequency and the pulse voltage
- single pulse and pulse sequences



Size (width/height/depth)	175/122/61 (mm)
Weight	0.4 kg
Control interface	USB
Pulse voltage range	+/- 100 V to +/-10.5 kV (depending on the connected probe)
Polarity	+/- or alternating
Pulse frequency range	0.1 Hz - 30 Hz (depending on the connected probe)
Supply voltage	12 V / 1A DC

Software:

BPS203_Client

- Self configuratin of the BPS 203 due to probe change
- Auto detection of the BPS 203 and the probe
- Display of hardware parameters (BPS 203 and probes)
- System requirement: min Windows 2000

