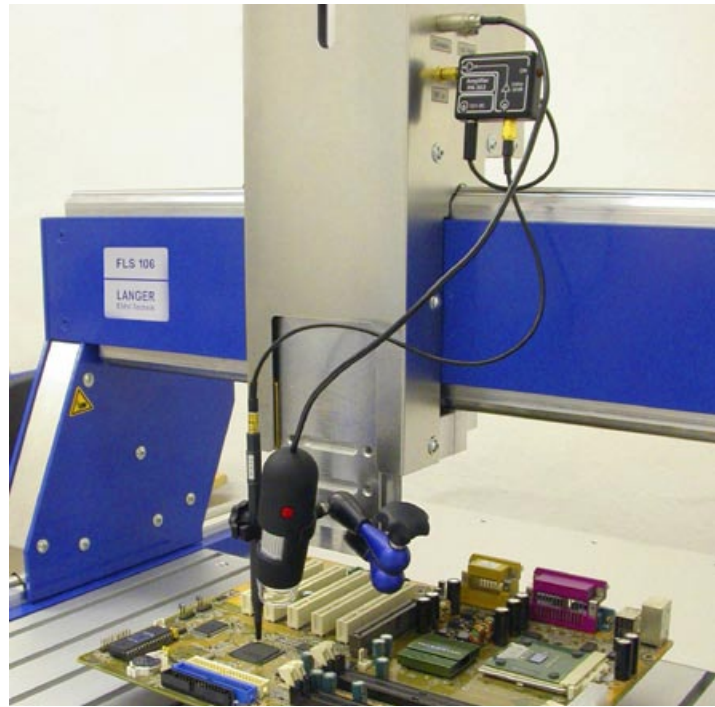


**Application:**

- Surface scans over PCBs
- Volume scans over PCBs

**System components:**

- 3-axis positioning system
- XF, RF, LF near-field probes of the customer's choice
- Universal PCB holder
- ChipScan-Scanner control and measurement software



**Properties:**

The scanner is controlled with the ChipScan-Scanner software via a PC. This software lets the user read out the measured data via a spectrum analyser, present this graphically in 2D or 3D as well as store and output this in a CSV file all at the same time.

The „collision protection“ software features:

- protects the probe head against destruction should it touch the DUT during a vertical approach
- measure below the safe height

<b>Axes</b>	<b>x</b>	<b>y</b>	<b>z</b>
Measuring range	600 mm	400 mm	125 mm
Accuracy	10 µm	10 µm	10 µm
Repeatability	+/- 20 µm	+/- 20 µm	+/- 20 µm
Speed	50 mm/s	50 mm/s	25 mm/s
Control	USB		
Supply voltage	110 / 230 V		
Dimensions / total weight	(1030 x 775 x 990) mm / 75 kg		

Software:	<p><b>ChipScan-Scanner</b></p> <ul style="list-style-type: none"> <li>- zero position, manual or script-based probe movement</li> <li>- reading the data from a spectrum analyser</li> <li>- visualisation of the measuring results in 2D or 3D</li> <li>- output as csv and image files</li> </ul>
optimal Accessories:	- XF, RF, LF near-field probes of the customer's choice
Scope of delivery:	<ul style="list-style-type: none"> <li>- FLS 106 PCB IC scanner</li> <li>- UH-DUT universal holder for receiving the electronics</li> <li>- ChipScan-Scanner software</li> </ul>
	The FLS 106 PCB can be upgraded to a FLS 106 IC.