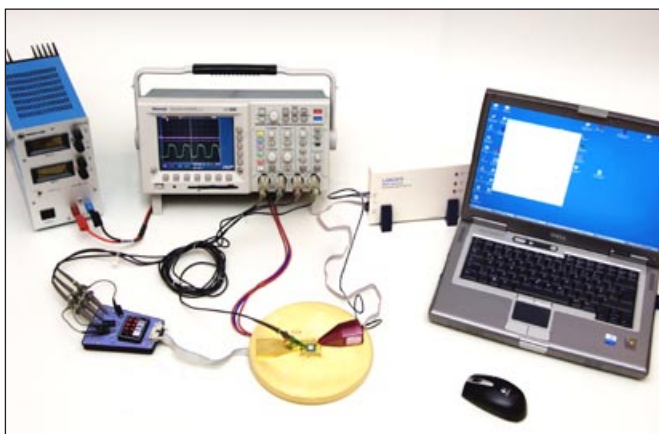
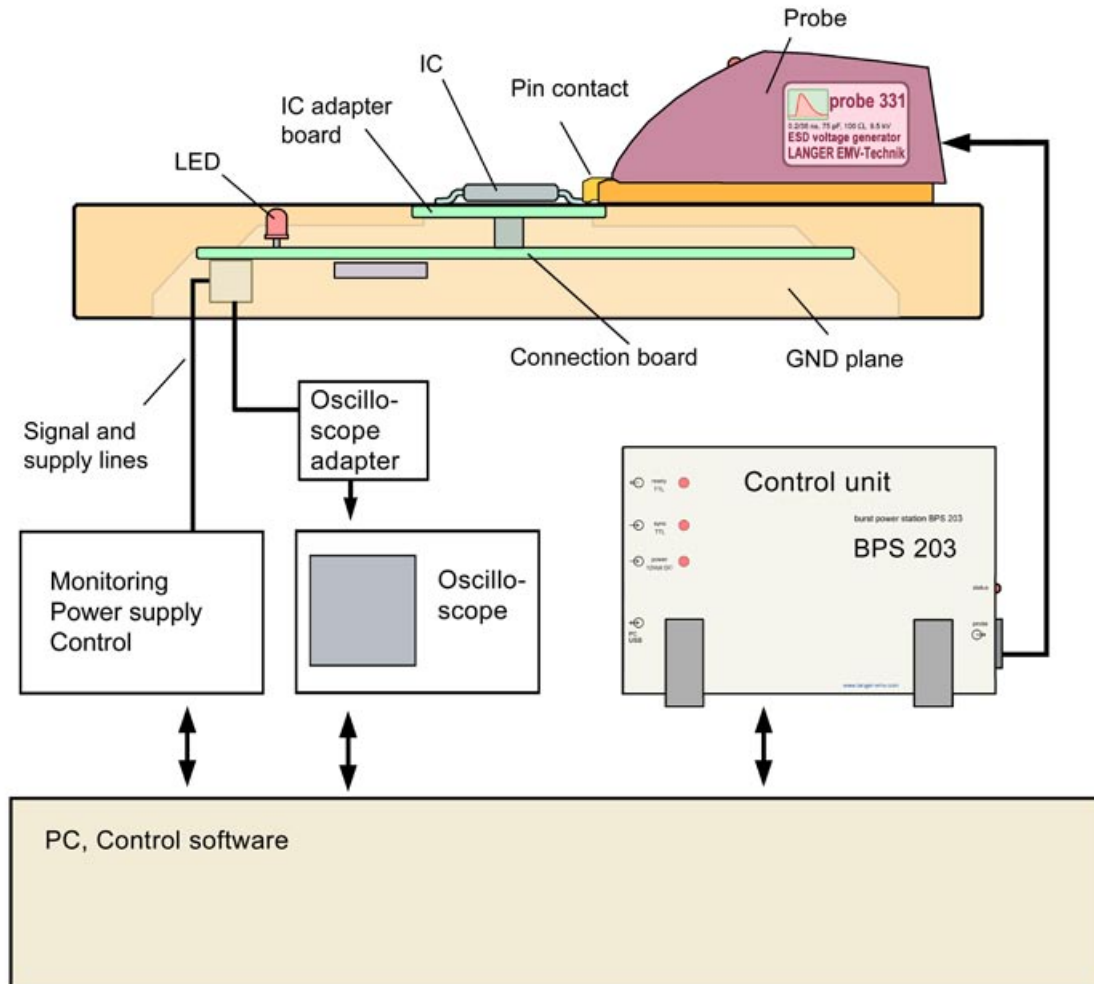


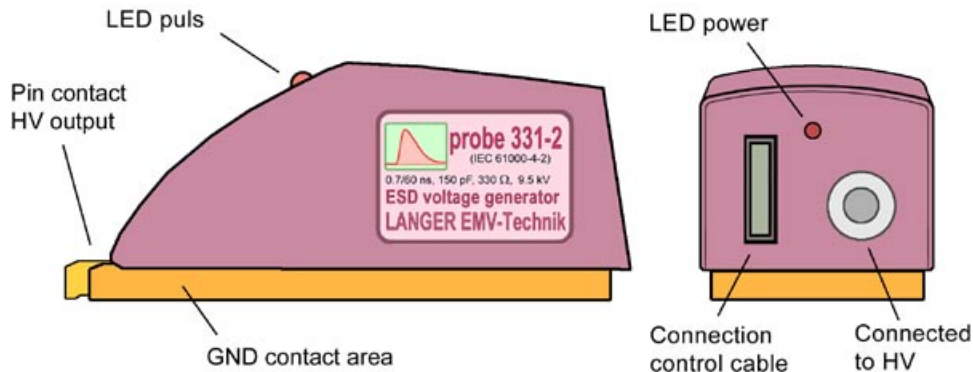
Measurements based on standard:  
- IEC 61000-4-2



Measurement set-up consisting of:

- Probe
- Control unit BPS 203
- GND plane
- Connection board CB 0708
- PC with „BursterClient“ software

ESD voltage generator (IEC 61000-4-2)



**Application:**

Conducted ESD coupling according IEC 61000-4-2 into the IC pin or in touch with coupler to inject in interface pin, specific high speed interfaces like USB, LVDS, Ethernet etc..

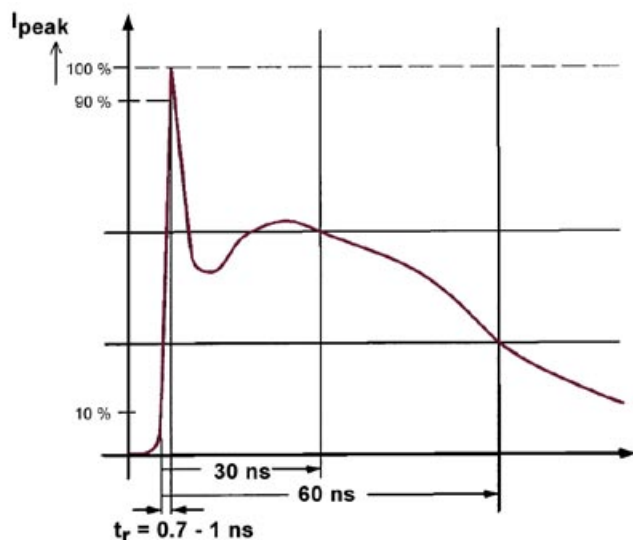
**Properties:**

ESD pulse (see figure pulse shape below)  
- the probe is operated with the BPS 203  
- controlled via a PC user interface

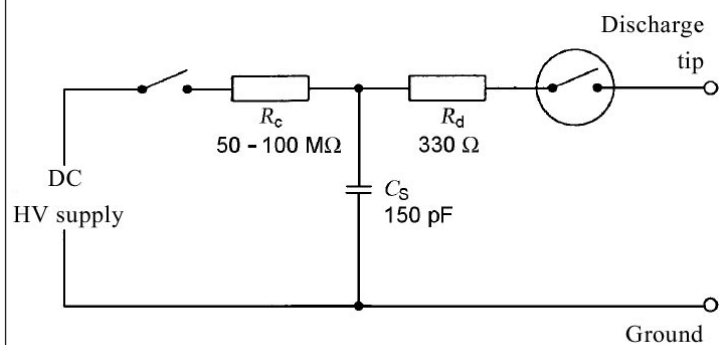
Pulse voltage	$\pm 0.1 - 9.5 \text{ kV}$
Pulse frequency	0.1 – 10 Hz
Pulse shape	0.7 / 60 ns
Energy storage capacitance	150 pF
Discharge resistance	330 $\Omega$

The probe 331-2 is only operated with the BPS 203 control station.

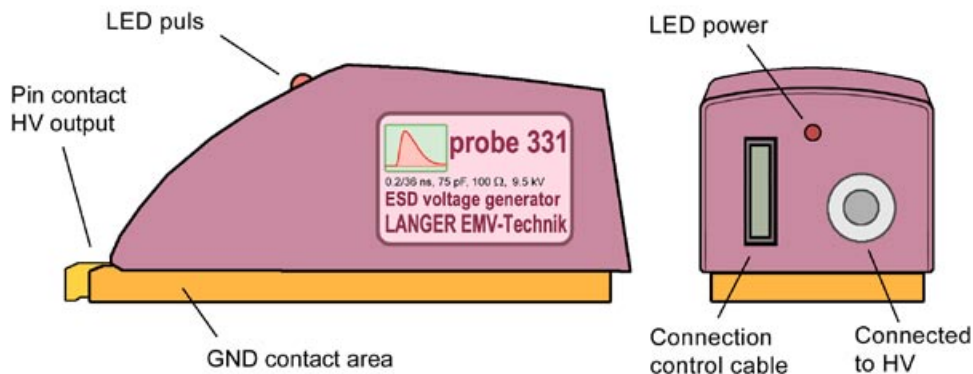
**Pulse shape (IEC 61000-4-2)**



**Equivalent circuit**



ESD voltage generator



Application:

Conducted coupling into the IC pin or in touch with coupler to inject in interface pin, specific high speed interfaces like USB, LVDS, Ethernet etc..

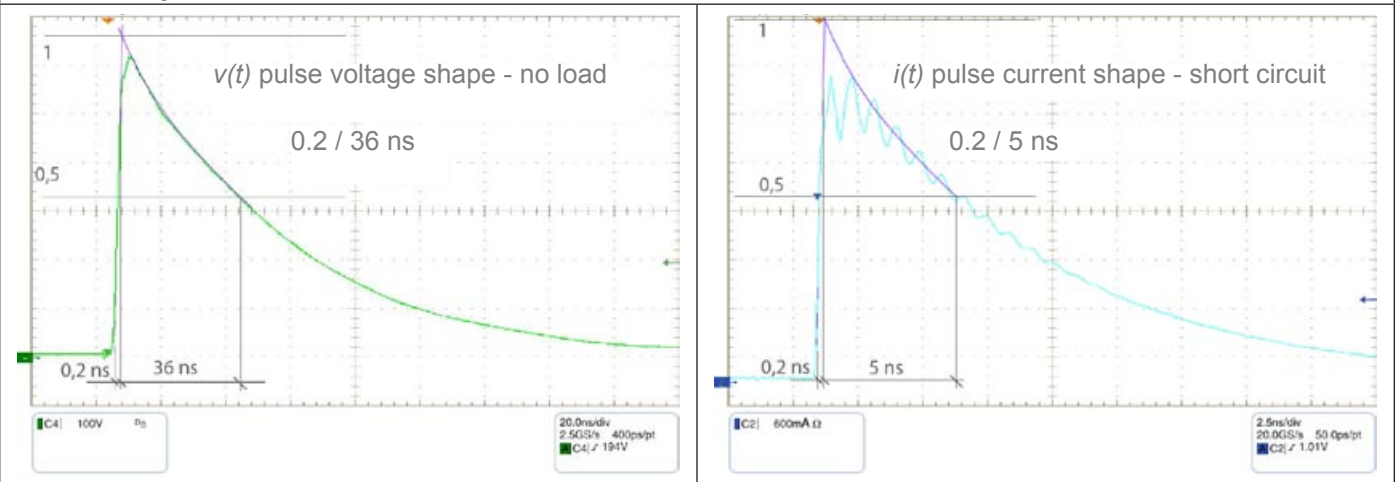
Properties:

ESD pulse (see figure pulse shape below)  
- the probe is operated with the BPS 203  
- controlled via a PC user interface

Pulse voltage	$\pm 0.1 - 9.5 \text{ kV}$
Pulse frequency	0.1 – 10 Hz
Pulse shape	0.2 / 36 ns
Energy storage capacitance	75 pF
Internal resistance	100 Ω

The probe 331 is only operated with the BPS 203 control station.

Pulse shape



### Burst power station for ESD probes

#### Application:

The BPS 203 is used together with the ESD probes P331 and P331-2.  
(plus 3.5: P1202, P1202-2, P1301)

#### Properties:

It supplies and drives the ESD probes.

The BPS 203 is connected to the PC via USB and supported by Software „BPS203\_Client“.

- regulate the pulse frequency and the pulse voltage
- single pulse and pulse sequences



Size (width/height/depth)	175/122/61 (mm)
Weight	0.35 kg
Control interface	USB
Pulse voltage range	+/- 100 V to +/-10.5 kV (depending on the connected probe)
Polarity	+/- or alternating
Pulse frequency range	0.1 Hz - 30 Hz (depending on the connected probe)
Supply voltage	12 V / 1A DC

#### Software:

##### BPS203\_Client

- Self configuratin of the BPS 203 due to probe change
- Auto detection of the BPS 203 and the probe
- Display of hardware parameters (BPS 203 and probes)
- System requirement:  
min Windows 2000

