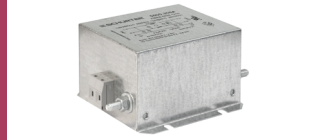


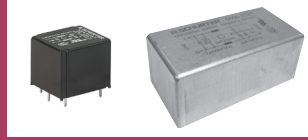
SINGLE PHASE AC AND DC FILTERS



FMW-41: All purpose, standard or medical filter. 1-10A, 125/250 VAC
FMW-55: 10-20A, 125/250 VAC, quick connect terminals



FMAB: For industrial applications such as frequency converters and inverters, 12-50A, 125/250 VAC, screw terminals



5500: Ultra compact, standard or medical 1-10A, 125/250VAC, PCB mount
FMAB 72: Aluminum case for optimal shielding, 2-16A, 125/250VAC, PCB mount



FMBB: For standard and industrial applications such as stepper motor drives and UPS systems, 8-25A, 125/250 VAC, screw terminals



FMBB NEO: Type F has excellent low frequency attenuation, 1-16A, 125/250 VAC, quick connect terminals



FMBB NEO: Compact Type C has high differential and common mode attenuation, 1-30A, 125/250 VAC, quick connect, nut and bolt terminals



FMBB NEO: Type D has excellent high frequency attenuation, 1-36A UL, 125/250 VAC, nut and bolt connections



FMW-150: 3-Stage filter, high broadband attenuation, 4-30A, 125/250 VAC, screw terminals



FMAB Rail: DIN rail mount, 1-Stage, industrial version for control cabinets 10-20A, 125/250 VAC



FMBB Rail: DIN rail mount for easy handling, standard or industrial versions, 2-Stage, broadband attenuation, 1-10A, 125/250 VAC



FMEB: DC filter for less noise and more stable DC power distribution. 5-30A, 43/80 VDC, quick connect or screw terminals



FMEEC: Optimized for DC applications in IT and Telecom, 5-30A, +80 VDC, quick connect or screw terminals

3 PHASE AC AND DC FILTERS



FMAC ECO: Filter partially potted for lightweight, economical solution. 16-150A, 480 VAC, mounts upright or lengthwise



FMAD: High current filter w/neutral conductor, approved for high temperature applications, 6-550A, 275-480 VAC, screw clamp terminals



FMAC: High voltage, wide current range filter. High performance, ideal for PV inverter applications, 6-1100A, 480/520 VAC



FMAC-Out: Output filter for frequency inverters, 8-32A, high voltage rating 550 VAC , insulated safety screw terminals



FMW4-65: Compact filter for three phases, neutral conductor and ground, 3-20A, 250/440 VAC, quick connect terminals



FMAC SINE: Sine wave output filter, allows motor cables up to 200m under full load. 4-16A, 500/288 VAC, screw clamp terminals



FMAC SINE DCL: Sine wave output filter, features DC link circuit, allows motor cables up to 1000m under full load, 4-16A, 500/288 VAC



FMBC: High voltage rating for standard and industrial applications. 8-64A, 480 VAC, screw clamp terminals



FMBC ECO: Filter partially potted for lightweight solution, excellent price/performance ratio, 10-115A, 480 VAC, nut and bolt, screw terminals



FMBC Book Style: Very compact slim filter for frequency converters and inverters 10-115A, 480 VAC, screw clamp / flexible wire terminals



FMBC NEO: Compact size, fits in tight spaces with excellent attenuation, 7-180A, 480/520 VAC, screw clamp terminals



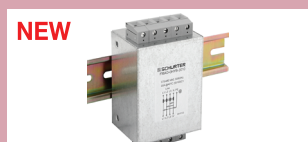
FMBD NEO: Terminals for 3 phases, neutral conductor and ground, intended for use in 4 wire systems. 8-200A, 300/520 VAC, screw clamp terminals



FMW4-81(95): Compact filter for frequency range 10kHz to 300MHz, 4-6A, 250/440 VAC, screw mount, quick connect terminals



FMAC Rail: 3-Phase, DIN rail mount, easy and time-saving handling, for control cabinets. 3-20A, 480 VAC



FMAD Rail: Compact DIN rail mount, 3-Phase w/neutral for industrial applications. 3-20A, 275-480 VAC



FMER SOL: For use in PV systems, **25-150A @600VDC, 250-1500A @1200(1000 UL) VDC**, screw clamp or copper bar terminals